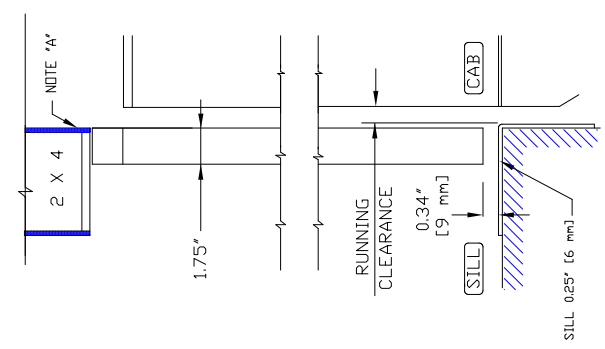
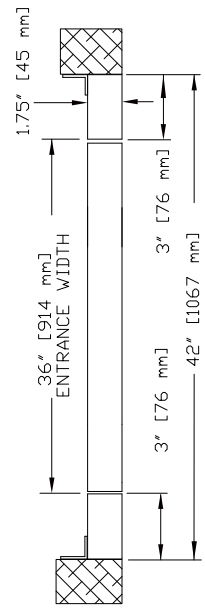
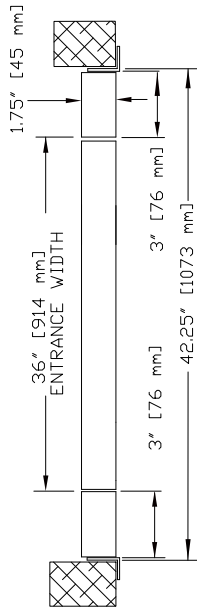


**NOTES:**  
 A) DRYWALL OR PARGING (BY OTHERS) AS REQ'D.  
 B) SEE DATASHEET OF THE INSTALLATION DRAWING FOR LANDING ENTRANCE SCHEDULE.  
 C) ALL INFORMATION IS SUBJECT TO CHANGE.

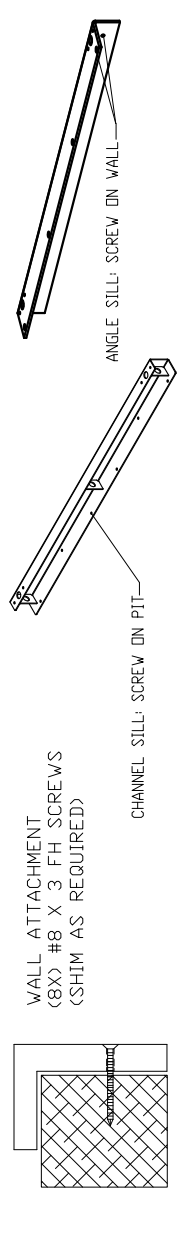
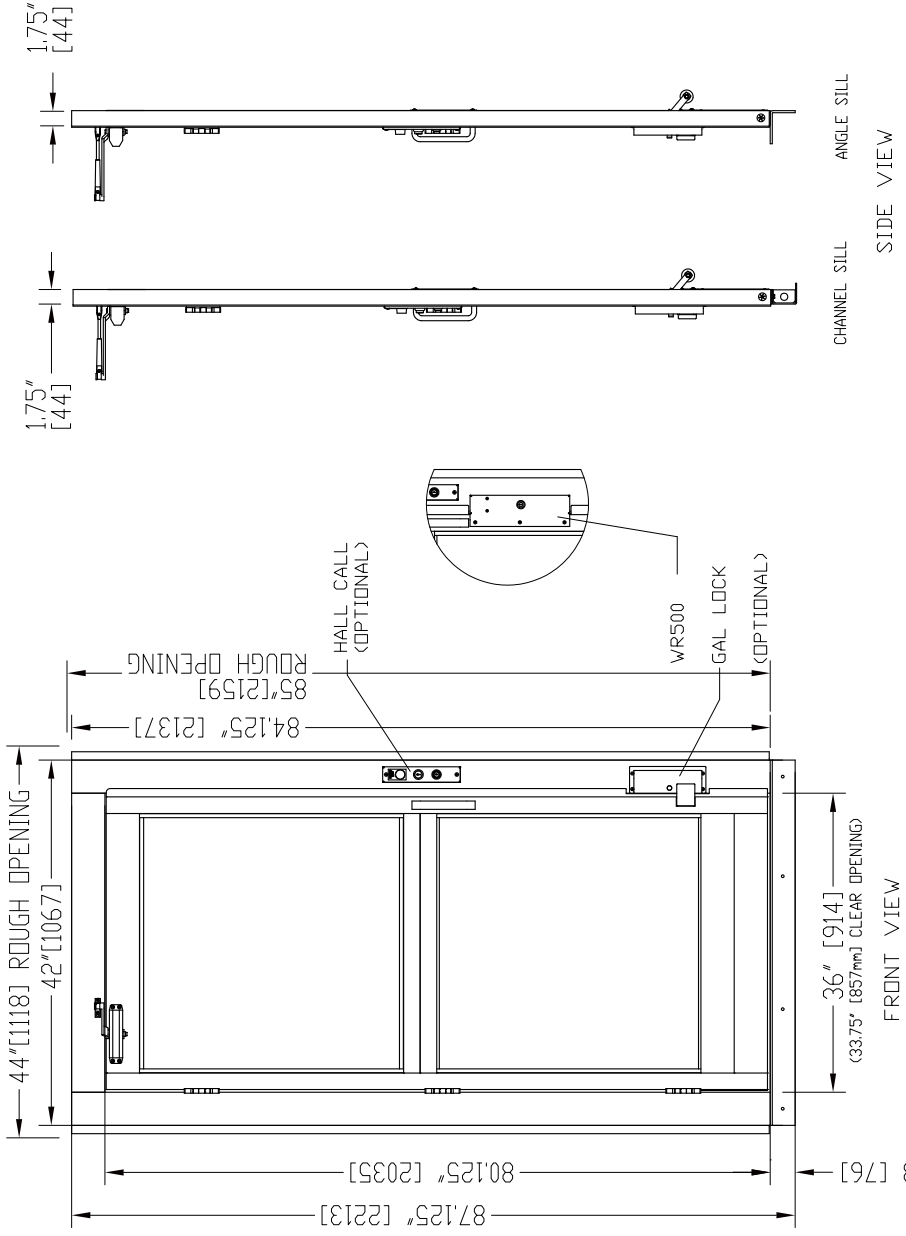
**GENERAL INFORMATIONS:**  
 - EACH LANDING ENTRANCE SHALL BE SUPPLIED AS A FINISHED ASSEMBLY WITH DOOR AND FRAME BLANKED, REINFORCED, DRILLED AND TAPPED FOR ALL COMPONENTS DETAILED, READY FOR INSTALLATION.  
 - DIFFERENT PANEL INSERT MATERIALS ARE OPTIONAL.  
 - DIFFERENT LOCKS SUCH AS GAL, OR WR500 ARE OPTIONAL.  
 - MANUAL DOOR DOOR CLOSER IS PROVIDED.



VERTICAL SECTION



HORIZONTAL SECTION



Part No. \_\_\_\_\_  
 Variant No. \_\_\_\_\_

DATE: \_\_\_\_\_  
 REVISOR: \_\_\_\_\_  
 DWG. NO.: \_\_\_\_\_  
 CHECKED BY: \_\_\_\_\_

CUSTOMER: \_\_\_\_\_  
 PROJECT: \_\_\_\_\_  
 ADDRESS: \_\_\_\_\_

80 RIGHT HAND MANUAL 36" DOOR

Part No. \_\_\_\_\_  
 Variant No. \_\_\_\_\_  
 DATE: \_\_\_\_\_  
 REVISOR: \_\_\_\_\_  
 DWG. NO.: \_\_\_\_\_  
 CHECKED BY: \_\_\_\_\_  
 CUSTOMER: \_\_\_\_\_  
 PROJECT: \_\_\_\_\_  
 ADDRESS: \_\_\_\_\_  
 80 RIGHT HAND MANUAL 36" DOOR

