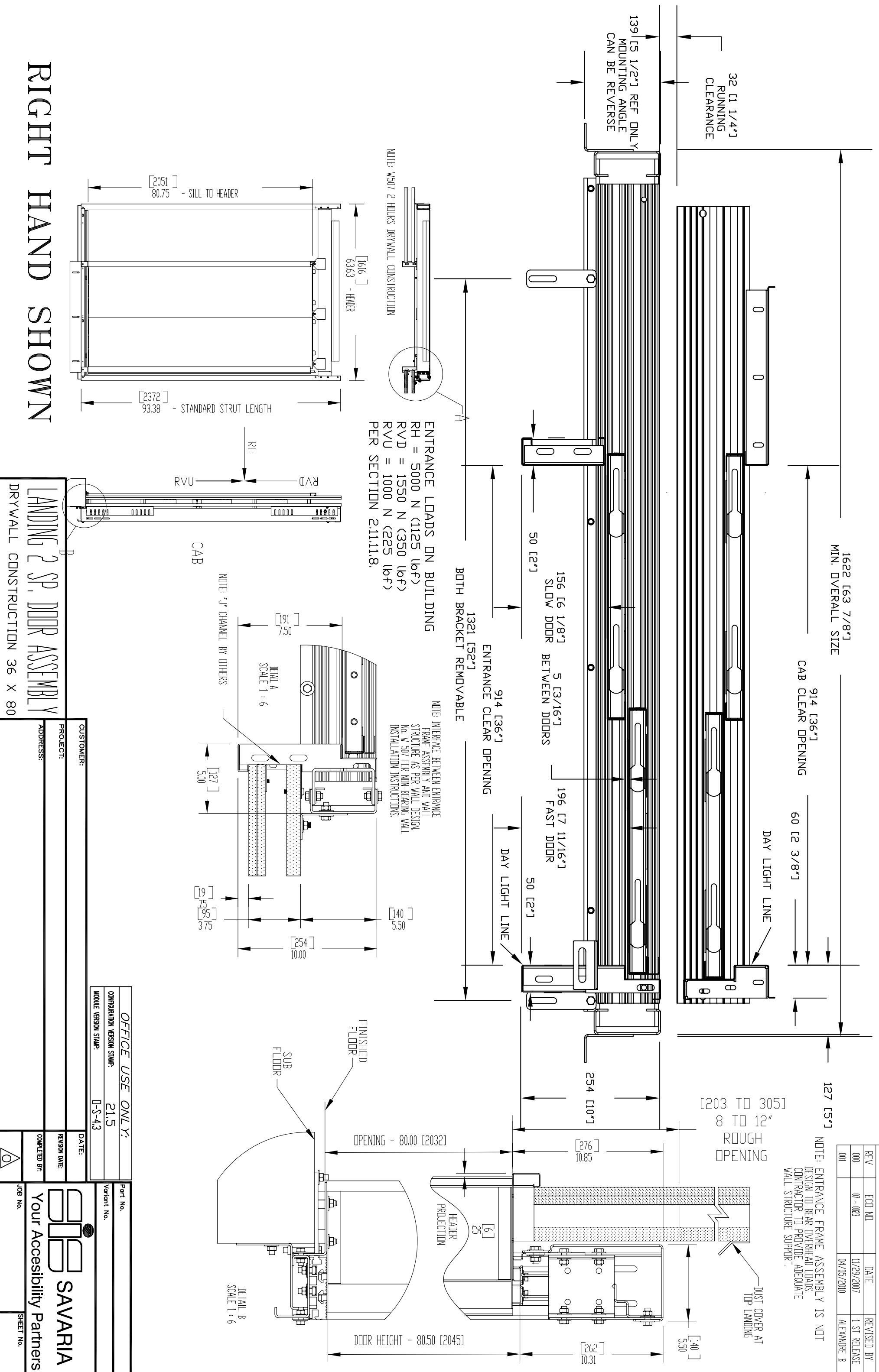


REVISIONS

REV	ECD NO.	DATE	REVISED BY
000	07-0023	11/29/2007	1 ST RELEASE
001		04/05/2010	ALEXANDRE B

NOTE: ENTRANCE FRAME ASSEMBLY IS NOT DESIGN TO BEAR OVERHEAD LOADS. CONTRACTOR TO PROVIDE ADEQUATE WALL STRUCTURE SUPPORT.



RIGHT HAND SHOWN

LANDING 2 SP. DOOR ASSEMBLY
 DRYWALL CONSTRUCTION 36 X 80

CUSTOMER:
 PROJECT:
 ADDRESS:

OFFICE USE ONLY:
 CONFIGURATION VERSION STAMP: 21.5
 MODULE VERSION STAMP: U-S-4.3

DATE:
 REVISION DATE:
 COMPLETED BY:
 JOB No.



SHEET No.