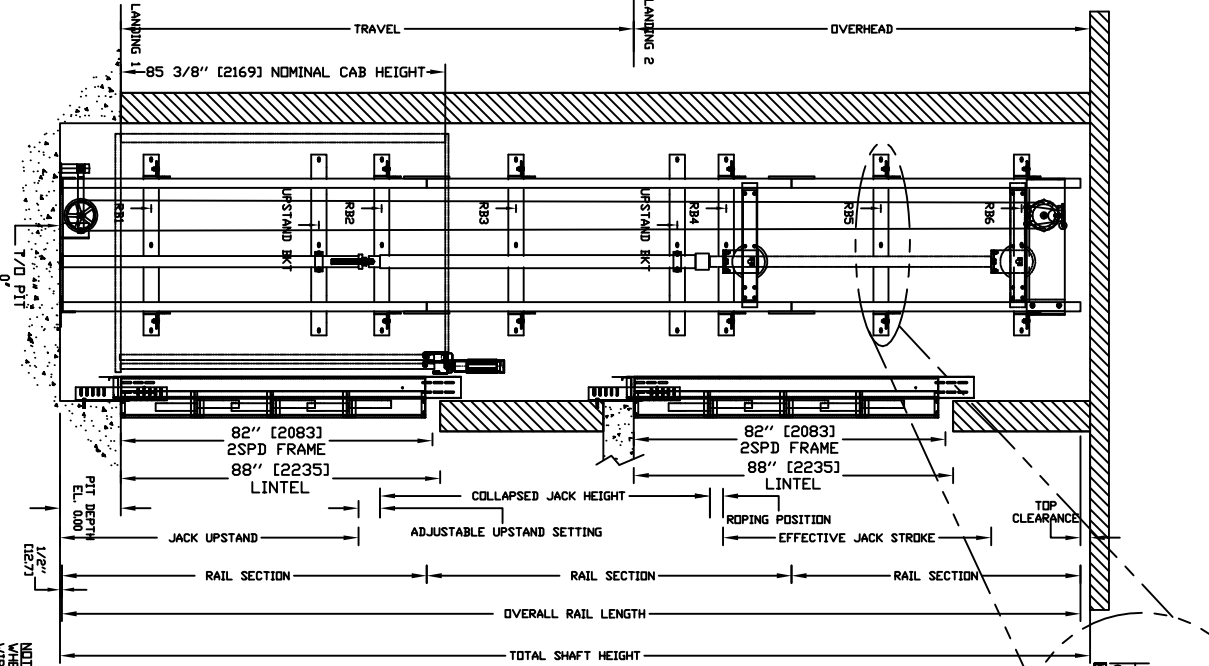
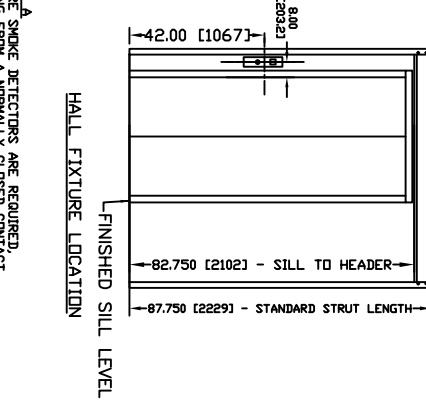
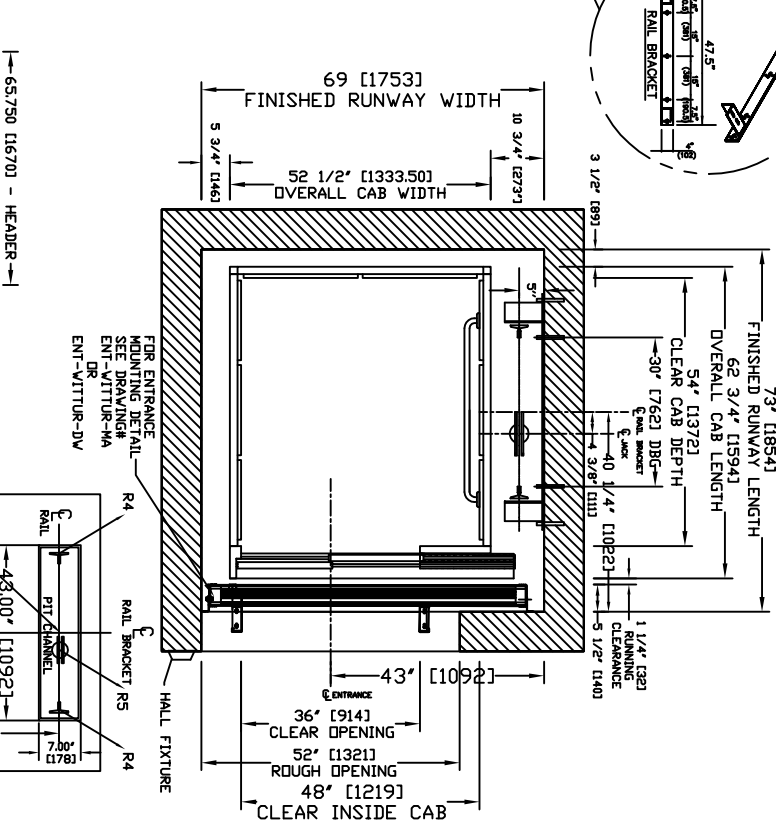


SECTIONAL VIEW - ORION-4854 (1R)



PLAN VIEW - ORION-4854 (1R) 2 SPEED WITTUR DOORS



SEISMIC ZONES 0 AND 1

CAB WIDTH	DIST (D)	PT PRE-ACTION FORCE
42"	31,657'	R3 8000 LBS
48"	31,657'	R4 3000 LBS
51"	31,657'	R5 9000 LBS
54"	31,657'	

RAIL FORCES

RAIL	FORCE
*R1	800 LBS
*R2	260 LBS
*R3	800 LBS
*R4	3000 LBS
*R5	9000 LBS

WARNING: ONLY APPLICABLE FOR SEISMIC ZONES 0 AND 1. FOR SEISMIC ZONES OTHER THAN 0 OR 1 PLEASE CONSULT WITH MANUFACTURER FOR REGIONAL SPECIFIC REQUIREMENTS.

***GENERAL** - THE HOISTWAY MUST BE IN ACCORDANCE WITH SAFETY CODE FOR ELEVATORS (ASME A17.1 OR 944-2000) AND ALL STATE/PROVINCIAL AND LOCAL CODES.

***PLUMB HOISTWAY** - DUE TO CLOSE RUNNING CLEARANCES OVERTURN/AGENT MUST ENSURE THAT HOISTWAY AND PIT (WHERE PROVIDED) ARE LEVEL, PLUMB AND SQUARE AND ARE IN ACCORDANCE WITH THE DIMENSIONS ON THESE DRAWINGS.

***MINIMUM OVERHEAD CLEARANCE** - OVERTURN/AGENT MUST ENSURE MINIMUM OVERHEAD CLEARANCE IS IN COMPLIANCE WITH CODES.

***CONSTRUCTION SITE** - OVERTURN/AGENT TO PROVIDE ALL MASONRY, CARPENTRY AND IRONWORK AS REQUIRED AND SHALL PATCH AND MAKE GOOD (INCLUDING FINISH PAINTING) ALL AREAS WHERE WALLS/FLOORS MAY REQUIRE TO BE CUT, DRILLED OR ALTERED IN ANY WAY TO PERMIT THE PROPER INSTALLATION OF THE LIFT.

***DIMENSIONS** - CONTRACTOR/CUSTOMER TO VERIFY ALL DIMENSIONS AND REPORT ANY DISCREPANCIES TO OUR OFFICE IMMEDIATELY.

***STRUCTURAL** - FLOOR/SUPPORT WALL LOADS - STRUCTURAL ENGINEER TO ASSURE THAT BUILDING AND SHAFT WALL SAFETY SUPPORT ALL LOADS IMPOSED BY THE LIFT EQUIPMENT. REFER TO THE TABLES ON THIS DRAWING FOR LOADS IMPOSED BY THE EQUIPMENT.

***DOORS** - SUITABLE LINTELS MUST BE PROVIDED BY OVERTURN/AGENT. DOOR FRAMES ARE NOT DESIGNED TO SUPPORT OVERHEAD WALL LOADS.

***MACHINE ROOM** - MACHINE ROOM LOCATED AT THE LOWEST LEVEL ADVANCE TO HOISTWAY, UNLESS SHOWN OTHERWISE ON THE LAYOUT DRAWINGS. FIELD ADJUSTMENT BY INSTALLER MAY BE NECESSARY TO MEET JOB SITE CONDITIONS OR REGULATIONS. ACCESS TO MACHINE ROOM TO BE THROUGH A SELF CLOSING AND SELF LOCKING DOOR.

***SLEEVES FOR OIL & ELECTRIC LINES** - PROVIDED BY OTHERS, FROM MACHINE ROOM TO HOISTWAY. POSITION PER INSTALLERS INSTRUCTIONS.

***ELECTRICAL** - POWER SUPPLY - (SEE SPECIFICATIONS) LOCKABLE FUSED DISCONNECT WITH AUXILIARY CONTACT TO BREAK THE BATTERY FEED OR CIRCUIT BREAKERS WITH A 3-POLE BREAKER FOR BATTERY FEED REQUIRED. ALL CONDUIT WITH ELECTRICAL WIRING TO MACHINE ROOM DOORS LOCATED ON WALL ON LOCK JAMB SIDE OF MACHINE ROOM DOOR. PERMANENT POWER - BEFORE INSTALLATION CAN BEGIN, PERMANENT POWER MUST BE SUPPLIED.

***LIGHTING** - OVERTURN/AGENT TO ENSURE AT LEAST 5 FTC OR 54 LUX AMBIENT LIGHTING OVER ELEVATOR AREA.

***ENTRANCES** - FASCIA PANEL BELOW UPPER LEVEL ENTRANCE - WHERE REQUIRED, FASCIA PANEL MUST BE FASTENED TO A SOLID WALL AND BE PERPENDICULAR TO THE FLOOR AND WALLS. HOISTWAY FASCIA IS NOT SELF-SUPPORTING FOR LING, CONTINUOUS RUNS VOID OF ENTRIES. ADEQUATE SUPPORT AND THE FASCIA MUST BE PROVIDED BY OTHERS.

***ENTRANCE ASSEMBLIES** - ENTRANCE ASSEMBLIES MUST BE ADJUSTED TO ALIGN WITH PLATFORM AND INTERLOCK EQUIPMENT. OTHERS TO ALLOW AN ADEQUATE ROUGH OPENING.

***RETURN WALLS** - RETURN WALLS AT ENTRANCES MUST BE BUILT-IN BY OTHERS. AFTER ENTRANCE ASSEMBLIES ARE IN PLACE ASSEMBLY MUST BE SECURELY FASTENED TO WALLS BY ELEVATOR CONTRACTOR.

***GENERAL** - THE HOISTWAY MUST BE IN ACCORDANCE WITH SAFETY CODE FOR ELEVATORS (ASME A17.1 OR 944-2000) AND ALL STATE/PROVINCIAL AND LOCAL CODES.

***PLUMB HOISTWAY** - DUE TO CLOSE RUNNING CLEARANCES OVERTURN/AGENT MUST ENSURE THAT HOISTWAY AND PIT (WHERE PROVIDED) ARE LEVEL, PLUMB AND SQUARE AND ARE IN ACCORDANCE WITH THE DIMENSIONS ON THESE DRAWINGS.

***MINIMUM OVERHEAD CLEARANCE** - OVERTURN/AGENT MUST ENSURE MINIMUM OVERHEAD CLEARANCE IS IN COMPLIANCE WITH CODES.

***CONSTRUCTION SITE** - OVERTURN/AGENT TO PROVIDE ALL MASONRY, CARPENTRY AND IRONWORK AS REQUIRED AND SHALL PATCH AND MAKE GOOD (INCLUDING FINISH PAINTING) ALL AREAS WHERE WALLS/FLOORS MAY REQUIRE TO BE CUT, DRILLED OR ALTERED IN ANY WAY TO PERMIT THE PROPER INSTALLATION OF THE LIFT.

***DIMENSIONS** - CONTRACTOR/CUSTOMER TO VERIFY ALL DIMENSIONS AND REPORT ANY DISCREPANCIES TO OUR OFFICE IMMEDIATELY.

***STRUCTURAL** - FLOOR/SUPPORT WALL LOADS - STRUCTURAL ENGINEER TO ASSURE THAT BUILDING AND SHAFT WALL SAFETY SUPPORT ALL LOADS IMPOSED BY THE LIFT EQUIPMENT. REFER TO THE TABLES ON THIS DRAWING FOR LOADS IMPOSED BY THE EQUIPMENT.

***DOORS** - SUITABLE LINTELS MUST BE PROVIDED BY OVERTURN/AGENT. DOOR FRAMES ARE NOT DESIGNED TO SUPPORT OVERHEAD WALL LOADS.

***MACHINE ROOM** - MACHINE ROOM LOCATED AT THE LOWEST LEVEL ADVANCE TO HOISTWAY, UNLESS SHOWN OTHERWISE ON THE LAYOUT DRAWINGS. FIELD ADJUSTMENT BY INSTALLER MAY BE NECESSARY TO MEET JOB SITE CONDITIONS OR REGULATIONS. ACCESS TO MACHINE ROOM TO BE THROUGH A SELF CLOSING AND SELF LOCKING DOOR.

***SLEEVES FOR OIL & ELECTRIC LINES** - PROVIDED BY OTHERS, FROM MACHINE ROOM TO HOISTWAY. POSITION PER INSTALLERS INSTRUCTIONS.

***ELECTRICAL** - POWER SUPPLY - (SEE SPECIFICATIONS) LOCKABLE FUSED DISCONNECT WITH AUXILIARY CONTACT TO BREAK THE BATTERY FEED OR CIRCUIT BREAKERS WITH A 3-POLE BREAKER FOR BATTERY FEED REQUIRED. ALL CONDUIT WITH ELECTRICAL WIRING TO MACHINE ROOM DOORS LOCATED ON WALL ON LOCK JAMB SIDE OF MACHINE ROOM DOOR. PERMANENT POWER - BEFORE INSTALLATION CAN BEGIN, PERMANENT POWER MUST BE SUPPLIED.

***LIGHTING** - OVERTURN/AGENT TO ENSURE AT LEAST 5 FTC OR 54 LUX AMBIENT LIGHTING OVER ELEVATOR AREA.

***ENTRANCES** - FASCIA PANEL BELOW UPPER LEVEL ENTRANCE - WHERE REQUIRED, FASCIA PANEL MUST BE FASTENED TO A SOLID WALL AND BE PERPENDICULAR TO THE FLOOR AND WALLS. HOISTWAY FASCIA IS NOT SELF-SUPPORTING FOR LING, CONTINUOUS RUNS VOID OF ENTRIES. ADEQUATE SUPPORT AND THE FASCIA MUST BE PROVIDED BY OTHERS.

***ENTRANCE ASSEMBLIES** - ENTRANCE ASSEMBLIES MUST BE ADJUSTED TO ALIGN WITH PLATFORM AND INTERLOCK EQUIPMENT. OTHERS TO ALLOW AN ADEQUATE ROUGH OPENING.

***RETURN WALLS** - RETURN WALLS AT ENTRANCES MUST BE BUILT-IN BY OTHERS. AFTER ENTRANCE ASSEMBLIES ARE IN PLACE ASSEMBLY MUST BE SECURELY FASTENED TO WALLS BY ELEVATOR CONTRACTOR.

INPUT VOLTAGE (V/PH/COILED)	DISCONNECT SIZE (AMPS)	FUSE (AMPS)	FULL LOAD CURRENT (AMPS)
208/3PH/60HZ	30	30	156
230/1PH/60HZ	60	50	21
115/1PH		15	

PIT / OVERHEAD REQUIREMENTS

MAX. SPEED (ft/min)	PIT	TOTAL TRAVEL	OVERHEAD
30	14" ***	131'(3327)	120'(3048)

*** NOTE: Additional pit equipment required when over 36" deep, consult your local dealer for details

NOTE A - WHERE SMOKE DETECTORS ARE REQUIRED, WIRING FROM A NORMALLY CLOSED CONTACT AT BOTH THE DESIGNATED RETURN LANDING, SMOKE DETECTOR AND SMOKE DETECTOR SHALL BE PROVIDED TO THE CONTROLLER. A NORMALLY CLOSED CONTACT REPRESENTING ALL OTHER SMOKE DETECTORS MUST BE PROVIDED TO THE CONTROLLER.

NOTE B - ALL INFORMATION IS SUBJECT TO CHANGE. PLEASE REFERENCE OUR ON-LINE DRAWINGS AT WWW.CONCORDELEVATOR.COM FOR THE MOST RECENT UPDATES



ORION MODEL 4854 (1R)

LU/LA REV-000